



**HD-KD05801A**

**5.8 Inch HDMI**

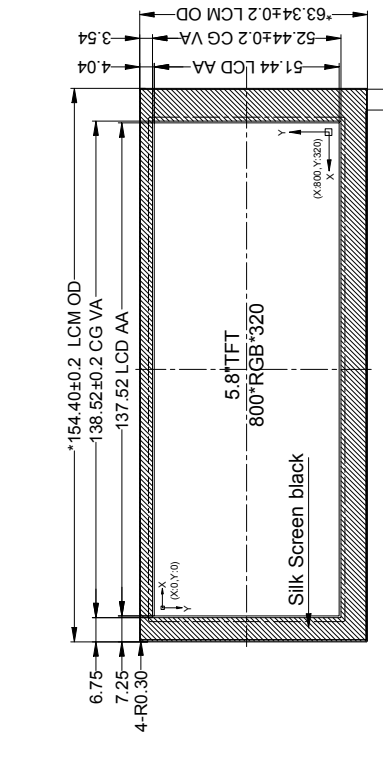


## 1. General Specifications

	Feature	Spec
Characteristics	Size	5.8 inch
	Resolution	800(horizontal)*320(Vertical)
	Interface	HDMI
	Connect type	Connector
	Display Colors	16.2M
	Technology type	a-Si
	Pixel pitch (mm)	0.1719*0.1607
	Pixel Configuration	R.G.B.-Stripe
	Display Mode	Normally White
	CTP Driver IC	GT5668
	Viewing Direction	12o'clock
	Gray Inversion Direction	6o'clock
Mechanical	LCM (W x H x D) (mm)	154.40*63.34*5.78
	Active Area(mm)	137.52 x51.44
	With /Without TSP	With CTP
	Weight (g)	TBD
	LED Numbers	24 LEDS

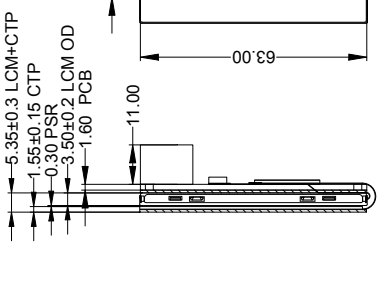
## 2. Drawing

**Front View**



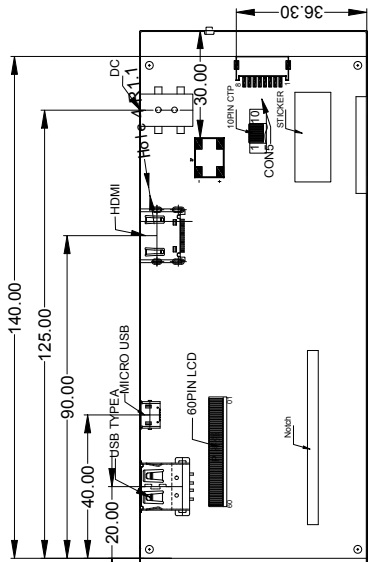
Dimensions:  
 4-R0.30, 6.75, 7.25, 154.40±0.2 LCM OD, 138.52±0.2 CG VA, 137.52 LCD AA, 5.8" TFT 800\*RGB\*320, Silk Screen black, (R3.0, Y0), (R8.00, Y, 320), X, Y, 51.44 LCD AA, 52.44±0.2 CG VA, 3.54, 63.34±0.2 LCM OD

**Side View**



Dimensions:  
 5.35±0.3 LCM+CTP, 1.55±0.15 CTP, 0.30 PSR, 3.50±0.2 LCM OD, 1.60 PCB, 11.00, 20.00, 40.00, 90.00, 125.00, 140.00, 3.00, 30.00, 60PIN LCD

**Back View**



Dimensions:  
 36.30, 3.00

**CON5**

PIN	SYMBOL
1	MENU
2	PWR
3	Escape key
4	select key+
5	right select key-
6	LED
7	GND
8	VCC

**HDMI**

PIN	SYMBOL
1	TMDS Data 2+
2	TMDS Data 2-
3	TMDS Data 1+
4	TMDS Data 1-
5	TMDS Data 0+
6	TMDS Data 0-
7	TMDS Data 0 S
8	TMDS Data 0 S
9	TMDS Data 0+
10	TMDS Clock+
11	TMDS Clock Sh
12	TMDS Clock
13	CEC
14	NC
15	ISCL
16	ISDA
17	IDDC/CEC GND
18	+5V
19	Hot Plug Detec

**JW1 DC**

1	12V
2	GND


**GND** **12V**

**MICRO USB**

PIN	SYMBOL
1	USB 5V
2	DM
3	DP
4	ID
5	GND

**USB TYPEA**

PIN	SYMBOL
1	USB 5V
2	DM
3	DP
4	GND

 <b>深圳市卡迪智能科技有限公司</b> PART NO. <b>KDI5801-01</b>	HDMI	INTERFACE	6 O'clock	VIEWING DIRECTION	12 O'clock	PROJECTION	3rd ANGLE	UNIT	mm	SCALE	1:1
	Material code: <b>KDI5801-01</b>	DWN	ZHS 2020.05.27	REV.	1.0	SHEET OF	1/1	TOLERANCE UNLESS SPECIFIED		±0.2	
	CHKD	ZHS 2020.05.27	SURFACE FINISH		MODIFICATION		DATE		REV.		
	First issue 2020.05.27										
	1.0 2020.05.27										

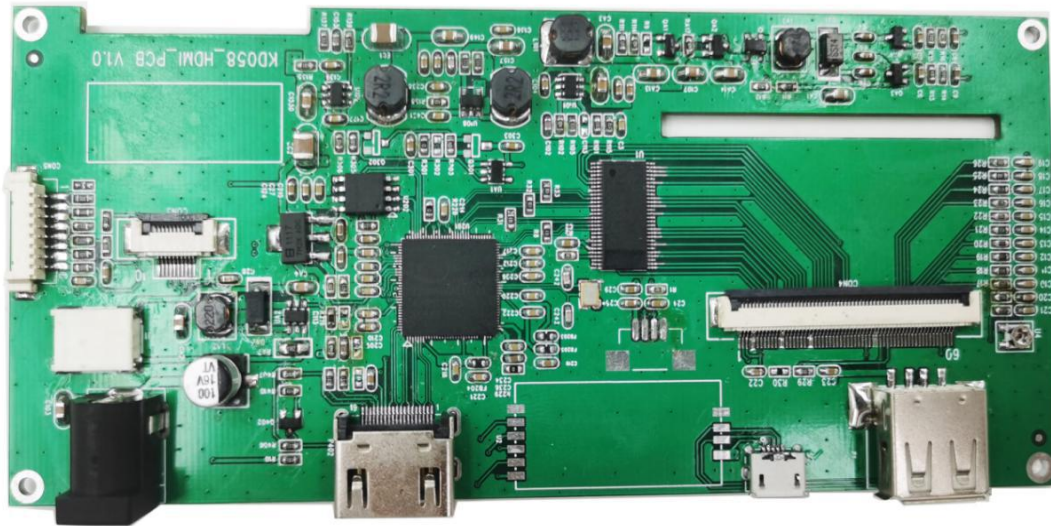
**NOTES:**

- DISPLAY TYPE: 5.8 INCH TFT /TRANSMISSIVE
- Luminance:400cd/m<sup>2</sup>(TYP)
- OPERATING TEMP: -20°C--+70°C STORAGE TEMP: -30°C--+80°C
- LCD Interface:HDMI CTP Interface: USB Power supply:12V 2A
- CTP Driver IC: GT5688
- Surface hardness: ≥6H;
- RoHS Compliance;

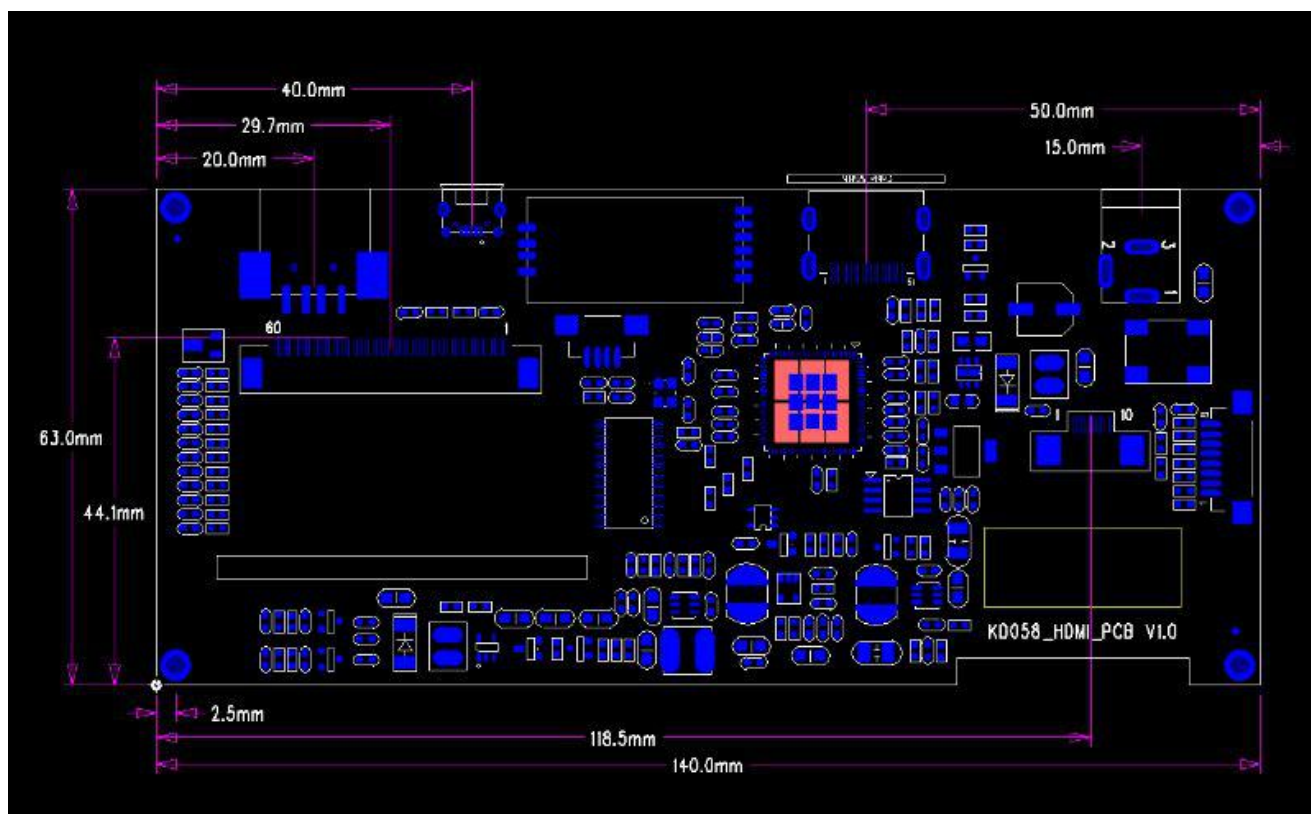
### 3. Electrical Characteristics

Item	Symbol	MIN	Typ	MAX	Unit
Operating Voltage	VDD	+10V	+12	+14	V
Operating Current	I <sub>dd</sub>	280	310	340	mA
Operating Temperature	TOPR	-20	-	70	°C
Storage Temperature	TSTG	-30	-	80	°C
Life time			30000		Hrs

### 4. PCB BOARD



## 5. PCB structure



## 6. PIN-MAP

### POWER CONNECTOR

DC JACK :DC005 (5.5-2.1MM)

Pin	Signal	Description
1	VDD	Power supply +12V
2	GND	GND

## TOUCH CONNECTOR

USB : TYPE A USB && MICRO USB

USB TYPE A

Pin	Signal	Description
1	USB 5V	Power supply 5V
2	DM	Data-
3	DP	Data+
4	GND	Ground

MICRO USB

Pin	Signal	Description
1	VDD	Power supply
2	D-	Data-
3	D+	Data+
4	NC	NC
5	GND	Ground

## HDMI CONNECTOR

HDMI : HDMI-019S

Pin	Signal	Description
1	TMDS Data 2+	TMDS Transition differential signal 2+
2	TMDS Data2 Sh	Data2 Shielding ground
3	TMDS Data 2-	TMDS Transition differential signal 2-
4	TMDS Data 1+	TMDS Transition differential signal 1+
5	TMDS Data1 Sh	Data1 Shielding ground
6	TMDS Data 1-	TMDS Transition differential signal 1-
7	TMDS Data 0+	TMDS Transition differential signal 0+
8	TMDS Data 0 S	Data0 Shielding ground
9	TMDS Data 0-	TMDS Transition differential signal 0-
10	TMDS Clock+	TMDS Transition differential signal Clock+
11	TMDS Clock Sh	Clock Shielding ground
12	TMDS Clock-	TMDS Transition differential signal Clock-
13	CEC	Electronic protocol CEC
14	NC	NC
15	SCL	I2C Clock Line
16	SDA	I2C DATA Line
17	DDC/CEC GND	Data display channel
18	+5V	+5V Power
19	Hot Plug Detec	Hot Plug Detec

## OSD KEY CONNECTOR

OSD:8P-1.25MM

<b>Pin</b>	<b>Signal</b>	<b>Description</b>
1	MENU	Popup menu KEY
2	PWR	Power KEY
3	EXIT	Exit KEY
4	UP	Up KEY
5	DOWN	Down KEY
6	LED	LED control
7	GND	Ground
8	VCC	KEY board POWER

## 7. Block Diagram

